

THIS IS AN EXCERPT FROM A **TRAINING LAB WORKBOOK** IN THE EARLY STAGES OF THE DATA INTEGRATION PROJECT WHICH LATER EVOLVED INTO THE INTEGRATED **SAFE SCHOOLS ONLINE WEBSITE APPLICATION** (FOR ALTERNATIVE EDUCATION, SCHOOL SAFETY, AND THE STUDENT ASSISTANCE PROGRAMS).

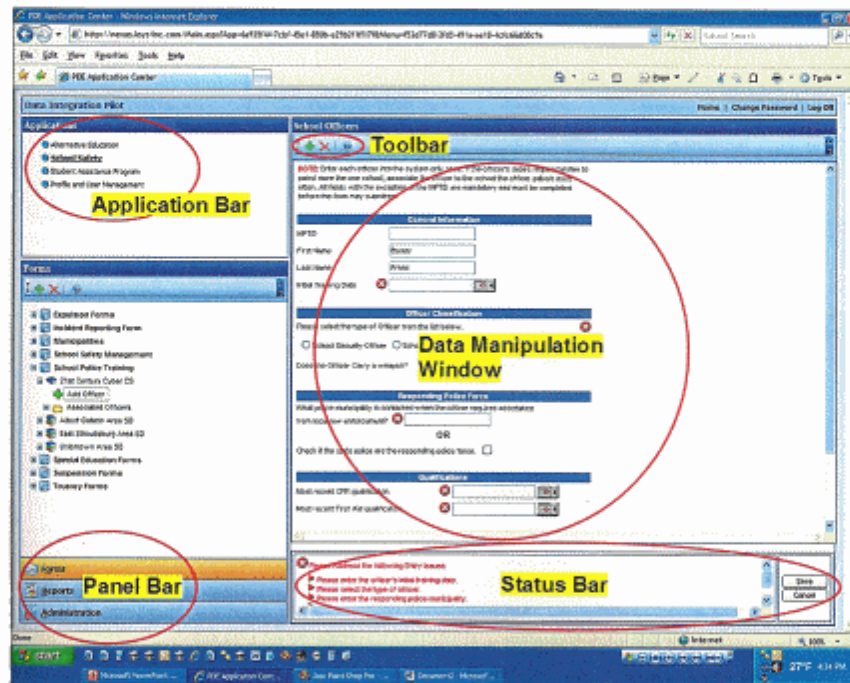
**THIS DOCUMENT IS THE PROPERTY OF THE PENNSYLVANIA DEPARTMENT OF EDUCATION (PDE).*

The following data elements are utilized in the system, *for internal program reporting and evaluation only*, and **are not** shared with PDE:

- PAMoreID
- Name
- Contact Information
- Address

Navigating the Data Integration Pilot Application Overview

The screenshot, below, depicts the areas of the Data Integration Pilot Application. Take a few moments to study the screenshot so you're knowledgeable of the areas which will be highlighted (and referred to) in this lab. *Feel free to refer back to this page while working through the lab workbook.*



The main navigational areas of the Data Integration Pilot Application include: **Application Bar** (Top Left), **Panel Bar** (Bottom Left), **Toolbar** (Top Right), **Data Manipulation Window** (Middle Right), and **Status Bar** area (Bottom Right).